



GUIDANCE DENTAL

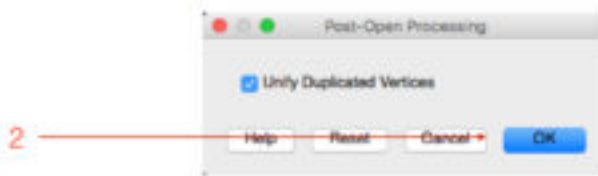
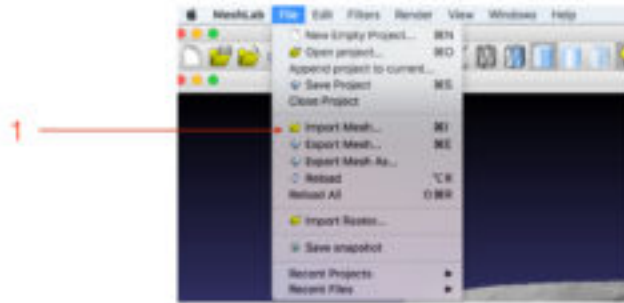
Bite Adjustments Using Meshlab



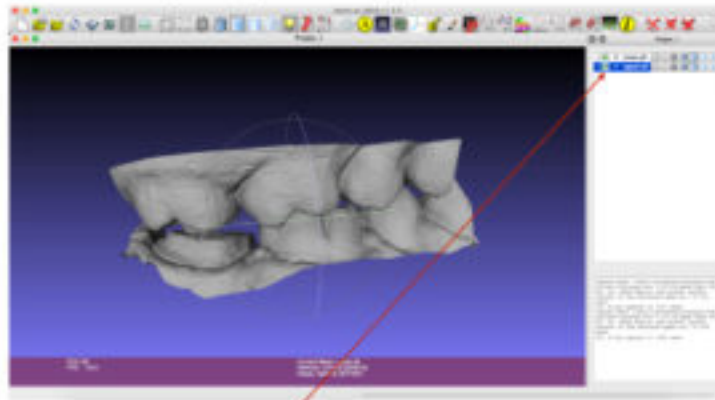
Description

This document provides a brief visual overview of how to download, install, and use Meshlab to make bite adjustments.

1. Download the version of Meshlab for your OS at <https://sourceforge.net/projects/meshlab>
2. Install Meshlab on your PC or Mac
3. Open STL files using Meshlab



Make sure you import both upper and lower mesh files.



You can click on eye mark to view/hide each arch, also choose the file you want to move/rotate.



Out of menubar on the top,



This is what you would need.

After you click on

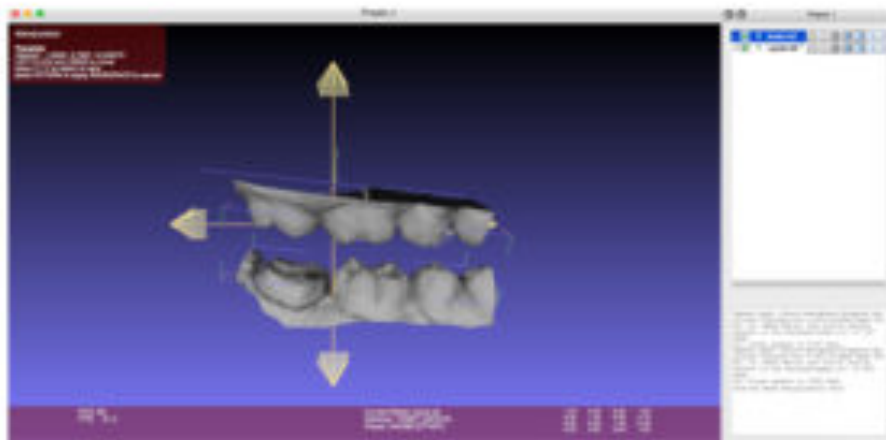


You will see

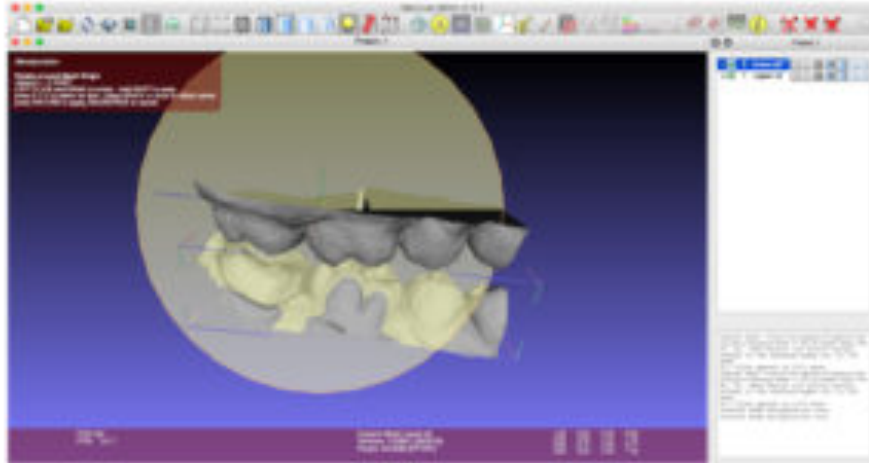
Manipulator
NONE
press **T** to translate, **R** to rotate, **S** to scale

on upper left corner.

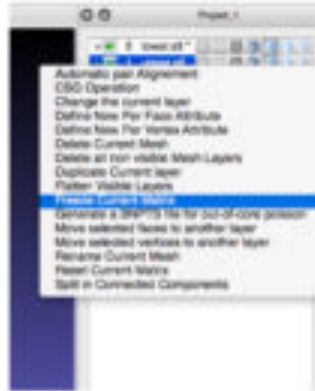
Once you press T, you would be able to translate the mesh
When you're satisfied with position, press Return.



Once you press R, you would be able to rotate the mesh
press XYZ to select an axis of rotation.
When you're satisfied with position, press Return.

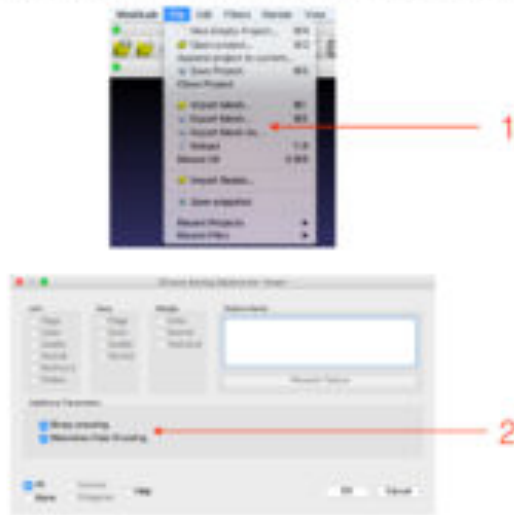


Once you're satisfied with new occlusion,
Make sure you save the new position!



Right click on one of the mesh files and Freeze Current Matrix

Export the mesh will lock in the new occlusion.



Binary STL files are smaller in size than ASCII ones