



# **GUIDANCE** DENTAL Implant Restoration with Guidance Coping



## Description

This document provides a brief visual overview of representative steps used to create a dental restoration comprised of an implant crown with a custom abutment.

Guidance Coping is shorter than traditional impression coping and comes in plastic disposable or titanium forms. Simply place the Guidance Coping on integrated fixture and take triple tray impression.

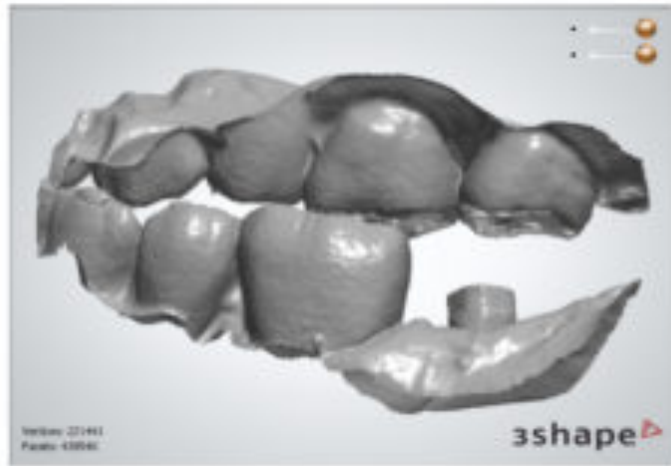
Guidance Coping



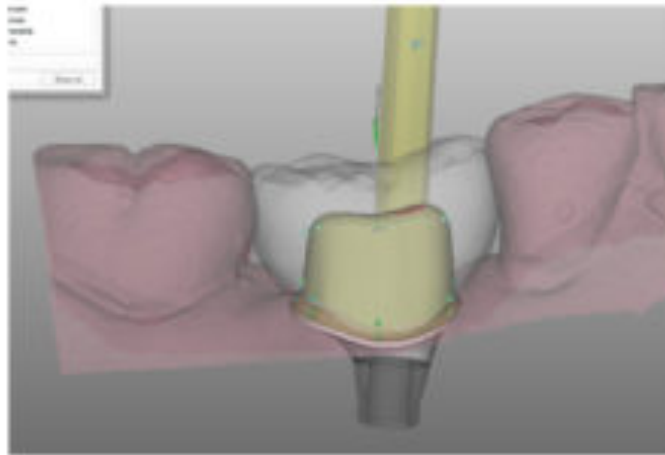
Impression with Triple Tray



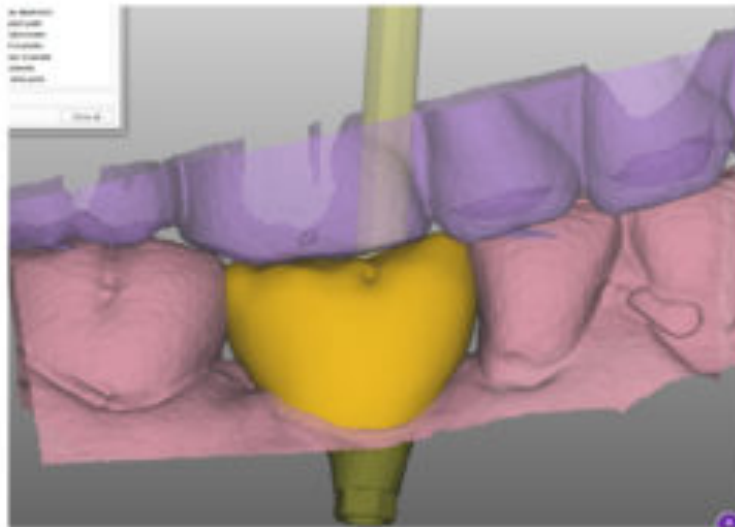
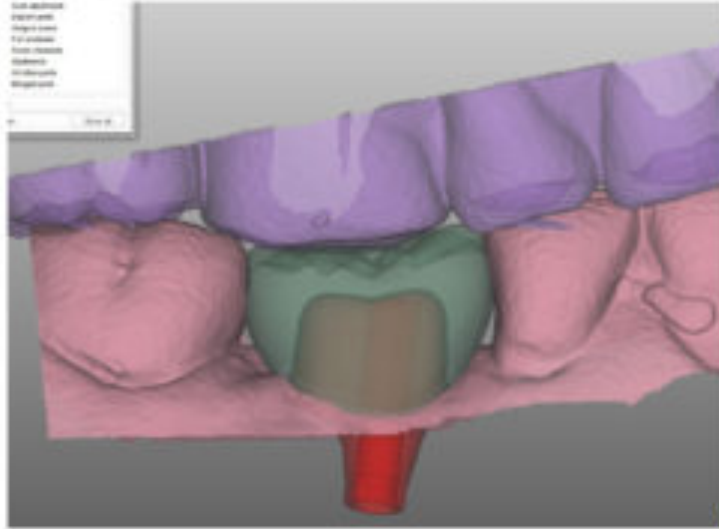
### 3D Model after Guidance Scan



### Design custom abutment



### Design crown above custom abutment



Screw retained implant crown with custom abutment

